

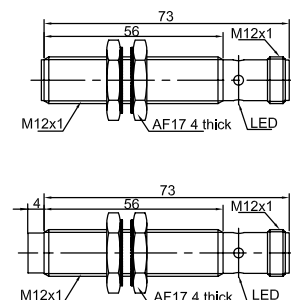
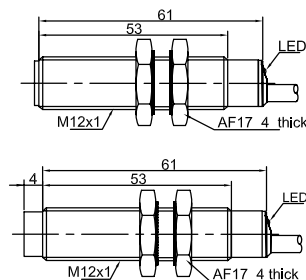
Item Code	LR12X		LR12X	
Mounting	● Flushed	◐ Non-flushed	● Flushed	◐ Non-flushed
Sensing distance	0.4... 2 mm	0.8... 4 mm	0.4... 2 mm	0.8... 4 mm




Output	0-10V	LR12XCF02LUM	LR12XCN04LUM	LR12XCF02LUM-E2	LR12XCN04LUM-E2
	0-20mA	LR12XCF02LIM	LR12XCN04LIM	LR12XCF02LIM-E2	LR12XCN04LIM-E2
4-20mA	LR12XCF02LI4M	LR12XCN04LI4M	LR12XCF02LI4M-E2	LR12XCN04LI4M-E2	
0-10V+0-20mA	LR12XCF02LIUM	LR12XCN04LIUM	LR12XCF02LIUM-E2	LR12XCN04LIUM-E2	

Technical Parameter				
Supply voltage	15...30 VDC	15...30 VDC	15...30 VDC	15...30 VDC
Switch point drift	< ±10% Sr	< ±10% Sr	< ±10% Sr	< ±10% Sr
Load current	Voltage output $R_L \geq 4.7k\Omega$, Current output $R_L \leq 470\Omega$		Voltage output $R_L \geq 4.7k\Omega$, Current output $R_L \leq 470\Omega$	
Voltage drop				
Consumption current	<20mA	<20mA	<20mA	<20mA
Hysteresis	< ±5%	< ±5%	< ±5%	< ±5%
Repeat accuracy	< ±3%	< ±3%	< ±3%	< ±3%
Frequency	200Hz	100Hz	200Hz	100Hz
Supply indicator	Yellow LED	Yellow LED	Yellow LED	Yellow LED
Polarity protection	yes	yes	yes	yes
Surge protection	yes	yes	yes	yes
Short-circuit protection
Ambient temperature	-25...+70°C	-25...+70°C	-25...+70°C	-25...+70°C
Ambient moisture	35...95%	35...95%	35...95%	35...95%
Protection degree	IP67	IP67	IP67	IP67
Housing material	Nickel-copper Alloy	Nickel-copper Alloy	Nickel-copper Alloy	Nickel-copper Alloy
Connection	2m PVC Cable	2m PVC Cable	M12 Connector	M12 Connector
Certification	CE U _L	CE U _L	CE U _L	CE U _L

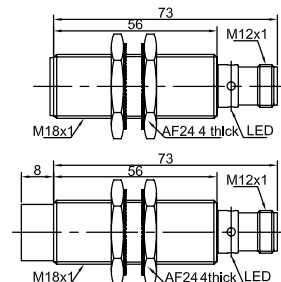
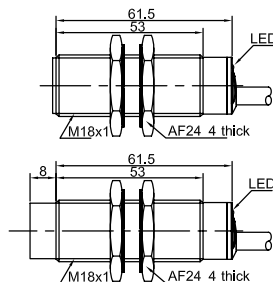
* Cable material and length can be customized




Item Code		LR18X		LR18X	
Mounting		● Flushed	◐ Non-flushed	● Flushed	◐ Non-flushed
Sensing distance		1... 5 mm	1.6... 8 mm	1... 5 mm	1.6... 8 mm
					
Output	0-10V	LR18XCF05LUM	LR18XCN08LUM	LR18XCF05LUM-E2	LR18XCN08LUM-E2
	0-20mA	LR18XCF05LIM	LR18XCN08LIM	LR18XCF05LIM-E2	LR18XCN08LIM-E2
	4-20mA	LR18XCF05LI4M	LR18XCN08LI4M	LR18XCF05LI4M-E2	LR18XCN08LI4M-E2
	0-10V+0-20mA	LR18XCF05LIUM	LR18XCN08LIUM	LR18XCF05LIUM-E2	LR18XCN08LIUM-E2

Technical Parameter					
Supply voltage		15...30 VDC	15...30 VDC	15...30 VDC	15...30 VDC
Switch point drift		< ±10% Sr	< ±10% Sr	< ±10% Sr	< ±10% Sr
Load current		Voltage output $R_L \geq 4.7K\Omega$, Current output $R_L \leq 470\Omega$		Voltage output $R_L \geq 4.7K\Omega$, Current output $R_L \leq 470\Omega$	
Voltage drop					
Consumption current		<20mA	<20mA	<20mA	<20mA
Hysteresis		< ±5%	< ±5%	< ±5%	< ±5%
Repeat accuracy		< ±3%	< ±3%	< ±3%	< ±3%
Frequency		200Hz	100Hz	200Hz	100Hz
Supply indicator		Yellow LED	Yellow LED	Yellow LED	Yellow LED
Polarity protection		yes	yes	yes	yes
Surge protection		yes	yes	yes	yes
Short-circuit protection	
Ambient temperature		-25...+70°C	-25...+70°C	-25...+70°C	-25...+70°C
Ambient moisture		35...95%	35...95%	35...95%	35...95%
Protection degree		IP67	IP67	IP67	IP67
Housing material		Nickel-copper Alloy	Nickel-copper Alloy	Nickel-copper Alloy	Nickel-copper Alloy
Connection		2m PVC Cable	2m PVC Cable	M12 Connector	M12 Connector
Certification		CE U _L	CE U _L	CE U _L	CE U _L

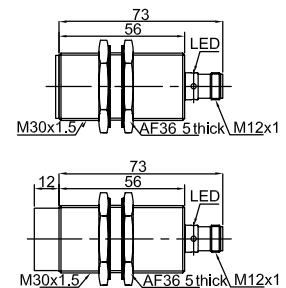
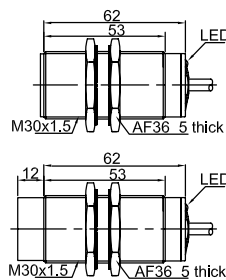
* Cable material and length can be customized



Item Code		LR30X		LR30X	
Mounting		● Flushed	◐ Non-flushed	● Flushed	◐ Non-flushed
Sensing distance		2... 10 mm	3... 15 mm	2... 10 mm	3... 15 mm
					
Output	0-10V	LR30XCF10LUM	LR30XCN15LUM	LR30XCF10LUM-E2	LR30XCN15LUM-E2
	0-20mA	LR30XCF10LIM	LR30XCN15LIM	LR30XCF10LIM-E2	LR30XCN15LIM-E2
	4-20mA	LR30XCF10LI4M	LR30XCN15LI4M	LR30XCF10LI4M-E2	LR30XCN15LI4M-E2
	0-10V+0-20mA	LR30XCF10LIUM	LR30XCN15LIUM	LR30XCF10LIUM-E2	LR30XCN15LIUM-E2

Technical Parameter					
Supply voltage		15...30 VDC	15...30 VDC	15...30 VDC	15...30 VDC
Switch point drift		< ±10% Sr	< ±10% Sr	< ±10% Sr	< ±10% Sr
Load current		Voltage output $R_L \geq 4.7K\Omega$, Current output $R_L \leq 470\Omega$		Voltage output $R_L \geq 4.7K\Omega$, Current output $R_L \leq 470\Omega$	
Voltage drop					
Consumption current		<20mA	<20mA	<20mA	<20mA
Hysteresis		< ±5%	< ±5%	< ±5%	< ±5%
Repeat accuracy		< ±3%	< ±3%	< ±3%	< ±3%
Frequency		200Hz	100Hz	200Hz	100Hz
Supply indicator		Yellow LED	Yellow LED	Yellow LED	Yellow LED
Polarity protection		yes	yes	yes	yes
Surge protection		yes	yes	yes	yes
Short-circuit protection	
Ambient temperature		-25...+70°C	-25...+70°C	-25...+70°C	-25...+70°C
Ambient moisture		35...95%	35...95%	35...95%	35...95%
Protection degree		IP67	IP67	IP67	IP67
Housing material		Nickel-copper Alloy	Nickel-copper Alloy	Nickel-copper Alloy	Nickel-copper Alloy
Connection		2m PVC Cable	2m PVC Cable	M12 Connector	M12 Connector
Certification		CE U _L	CE U _L	CE U _L	CE U _L

* Cable material and length can be customized



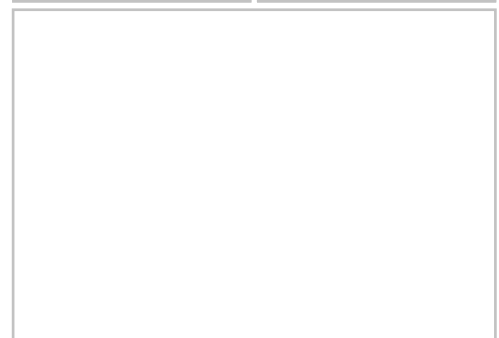
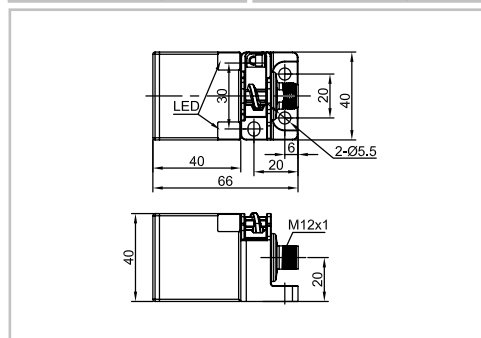
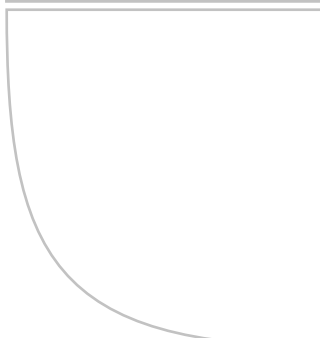
Item Code	LE40SZ			
Mounting	● Flushed	● Non-flushed		
Sensing distance	2... 10 mm	3... 15 mm		



Output	0-10V	LE40SZSF10LUM-E2	LE40SZSN15LUM-E2		
	0-20mA	LE40SZSF10LIM-E2	LE40SZSN15LIM-E2		
	4-20mA	LE40SZSF10LI4M-E2	LE40SZSN15LI4M-E2		
	0-10V+0-20mA	LE40SZSF10LIUM-E2	LE40SZSN15LIUM-E2		

Technical Parameter

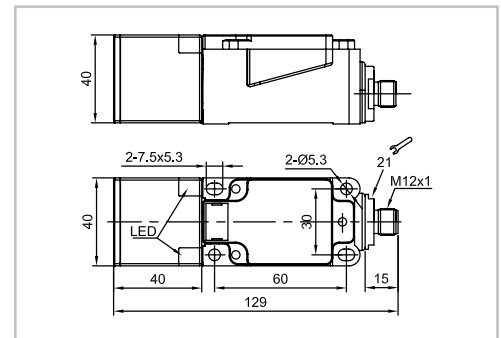
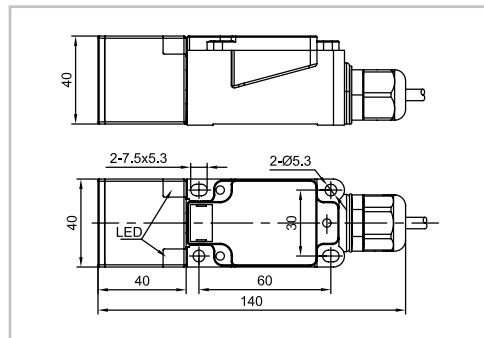
Supply voltage	15...30 VDC	15...30 VDC		
Switch point drift	< ±10% Sr	< ±10% Sr		
Load current	Voltage output $R_L \geq 4.7K\Omega$, Current output $R_L \leq 470\Omega$			
Voltage drop				
Consumption current	<20mA	<20mA		
Hysteresis	< ±5%	< ±5%		
Repeat accuracy	< ±3%	< ±3%		
Frequency	100Hz	50Hz		
Supply indicator	Yellow LED	Yellow LED		
Polarity protection	yes	yes		
Surge protection	yes	yes		
Short-circuit protection		
Ambient temperature	-25...+70°C	-25...+70°C		
Ambient moisture	35...95%	35...95%		
Protection degree	IP67	IP67		
Housing material	PBT	PBT		
Connection	M12 Connector	M12 Connector		
Certification	CE U _L	CE U _L		

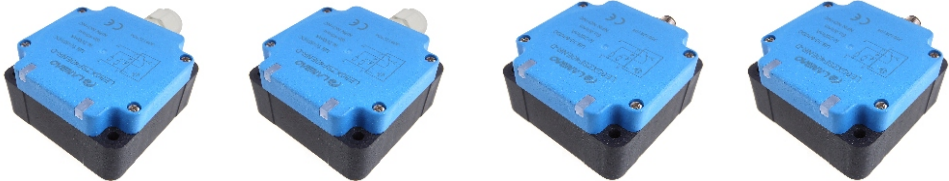


Item Code		LE40XZ		LE40XZ		
Mounting		● Flushed	◐ Non-flushed	● Flushed	◐ Non-flushed	
Sensing distance		2... 10 mm	3... 15 mm	2... 10 mm	3... 15 mm	
Output		0-10V	LE40XZSF10LUM-D	LE40XZSN15LUM-D	LE40XZSF10LUM-E2	LE40XZSN15LUM-E2
		0-20mA	LE40XZSF10LIM-D	LE40XZSN15LIM-D	LE40XZSF10LIM-E2	LE40XZSN15LIM-E2
		4-20mA	LE40XZSF10LI4M-D	LE40XZSN15LI4M-D	LE40XZSF10LI4M-E2	LE40XZSN15LI4M-E2
		0-10V+0-20mA	LE40XZSF10LIUM-D	LE40XZSN15LIUM-D	LE40XZSF10LIUM-E2	LE40XZSN15LIUM-E2



Technical Parameter				
Supply voltage	15...30 VDC	15...30 VDC	15...30 VDC	15...30 VDC
Switch point drift	< ±10% Sr	< ±10% Sr	< ±10% Sr	< ±10% Sr
Load current	Voltage output $R_L \geq 4.7K\Omega$, Current output $R_L \leq 470\Omega$		Voltage output $R_L \geq 4.7K\Omega$, Current output $R_L \leq 470\Omega$	
Voltage drop				
Consumption current	<20mA	<20mA	<20mA	<20mA
Hysteresis	< ±5%	< ±5%	< ±5%	< ±5%
Repeat accuracy	< ±3%	< ±3%	< ±3%	< ±3%
Frequency	100Hz	50Hz	100Hz	50Hz
Supply indicator	Yellow LED	Yellow LED	Yellow LED	Yellow LED
Polarity protection	yes	yes	yes	yes
Surge protection	yes	yes	yes	yes
Short-circuit protection
Ambient temperature	-25...+70°C	-25...+70°C	-25...+70°C	-25...+70°C
Ambient moisture	35...95%	35...95%	35...95%	35...95%
Protection degree	IP67	IP67	IP67	IP67
Housing material	PBT	PBT	PBT	PBT
Connection	Terminal connect	Terminal connect	M12 Connector	M12 Connector
Certification	CE U _L	CE U _L	CE U _L	CE U _L



Item Code		LE80XZ		LE80XZ	
Mounting		● Flushed	◐ Non-flushed	● Flushed	◐ Non-flushed
Sensing distance		8... 40 mm	10... 50 mm	8... 40 mm	10... 50 mm
					
Output	0-10V	LE80XZSF40LUM-D	LE80XZSN50LUM-D	LE80XZSF40LUM-E2	LE80XZSN50LUM-E2
	0-20mA	LE80XZSF40LIM-D	LE80XZSN50LIM-D	LE80XZSF40LIM-E2	LE80XZSN50LIM-E2
	4-20mA	LE80XZSF40LI4M-D	LE80XZSN50LI4M-D	LE80XZSF40LI4M-E2	LE80XZSN50LI4M-E2
	0-10V+0-20mA	LE80XZSF40LIUM-D	LE80XZSN50LIUM-D	LE80XZSF40LIUM-E2	LE80XZSN50LIUM-E2

Technical Parameter					
Supply voltage		15...30 VDC	15...30 VDC	15...30 VDC	15...30 VDC
Switch point drift		< ±10% Sr	< ±10% Sr	< ±10% Sr	< ±10% Sr
Load current		Voltage output $R_L \geq 4.7K\Omega$, Current output $R_L \leq 470\Omega$		Voltage output $R_L \geq 4.7K\Omega$, Current output $R_L \leq 470\Omega$	
Voltage drop					
Consumption current		<20mA	<20mA	<20mA	<20mA
Hysteresis		< ±5%	< ±5%	< ±5%	< ±5%
Repeat accuracy		< ±3%	< ±3%	< ±3%	< ±3%
Frequency		80Hz	40Hz	80Hz	40Hz
Supply indicator		Yellow LED	Yellow LED	Yellow LED	Yellow LED
Polarity protection		yes	yes	yes	yes
Surge protection		yes	yes	yes	yes
Short-circuit protection	
Ambient temperature		-25...+70°C	-25...+70°C	-25...+70°C	-25...+70°C
Ambient moisture		35...95%	35...95%	35...95%	35...95%
Protection degree		IP67	IP67	IP67	IP67
Housing material		PBT	PBT	PBT	PBT
Connection		Terminal connect	Terminal connect	M12 Connector	M12 Connector
Certification		CE U _L	CE U _L	CE U _L	CE U _L

